

# 47.25 ACRES OF VACANT LAND

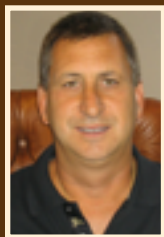
HIGHWAY 260, COTTONWOOD, AZ 86326  
I-2

FOR SALE \$3,200,000

[WWW.DAVINCIREALTY.COM](http://WWW.DAVINCIREALTY.COM)



COMMERCIAL  
INVESTMENTS



EXCLUSIVELY OFFERED BY DA VINCI REALTY, LLC

Mark T. Belsanti, CCIM

928.254.1770 (C)

928.779.3800 (O)

928.222.0189 (F)

[mark@davincirealty.com](mailto:mark@davincirealty.com)

All information furnished regarding property for sale, rental or financing is from sources deemed reliable, but no warranty or representation is made to the accuracy thereof and same is submitted subject to errors, omissions, change of price, rental or other conditions prior to sale, lease or financing or withdrawal without notice. No liability of any kind is to be imposed on the broker herein.



# PROPERTY PROFILE



## PROPERTY LOCATION

Property is located on Hwy 260 at the entrance to the City of Cottonwood. Adjacent properties include Steve Coury Buick, Griffith Enterprises, Genesis Worldwide, and the future site of an RV Park.

ADDITIONAL REMARKS: To find out information on surrounding businesses, see websites listed:  
[www.stevécoury.com](http://www.stevécoury.com), [www.griffithent.com](http://www.griffithent.com), and  
[www.genesisworldwide.biz](http://www.genesisworldwide.biz).



## PROPERTY DESCRIPTION

Commercial/Industrial 47.25 Acre site consisting of five parcels; 407-09-163E, 407-09-163H, 407-09-163G, 407-09-150X, and 407-09-150U. Permitted uses include but are not limited to any permitted in the c-2 Zone, Warehouses, Outdoor Storage Yards, Heavy Construction Equipment Yards, and Industrial and Manufacturing Establishments. Property has 1,237' of frontage on Hwy260. Broker/Agent hold interest in property.



COMMERCIAL  
INVESTMENTS

EXCLUSIVELY OFFERED BY DA VINCI REALTY, LLC

Mark T. Belsanti, CCIM  
928.254.1770 (C)  
928.779.3800 (O)  
928.222.0189 (F)  
[mark@davincirealty.com](mailto:mark@davincirealty.com)

All information furnished regarding property for sale, rental or financing is from sources deemed reliable, but no warranty or representation is made to the accuracy thereof and same is submitted subject to errors, omissions, change of price, rental or other conditions prior to sale, lease or financing or withdrawal without notice. No liability of any kind is to be imposed on the broker herein.

# INFORMATION



ADDRESS Highway 260, Cottonwood, AZ 86326

PRICE \$3,200,000

TERMS Cash, Cash to New Loan, Submit

PRICE PER SQ FT \$1.55

LOT SIZE 47.25 Acres

201 TAXES \$5 / 2013

ZONING I-2

PARCEL NUMBERS 407-09-163E, 407-09-163H, 407-09-163G,  
407-09-150X, and 407-09-150U.

PROPERTY TYPE Vacant Land

COUNTY Yavapai

UTILITIES None Installed; Available: Electricity, Natural Gas,  
Private Water, Septic, Telephone.



COMMERCIAL  
INVESTMENTS

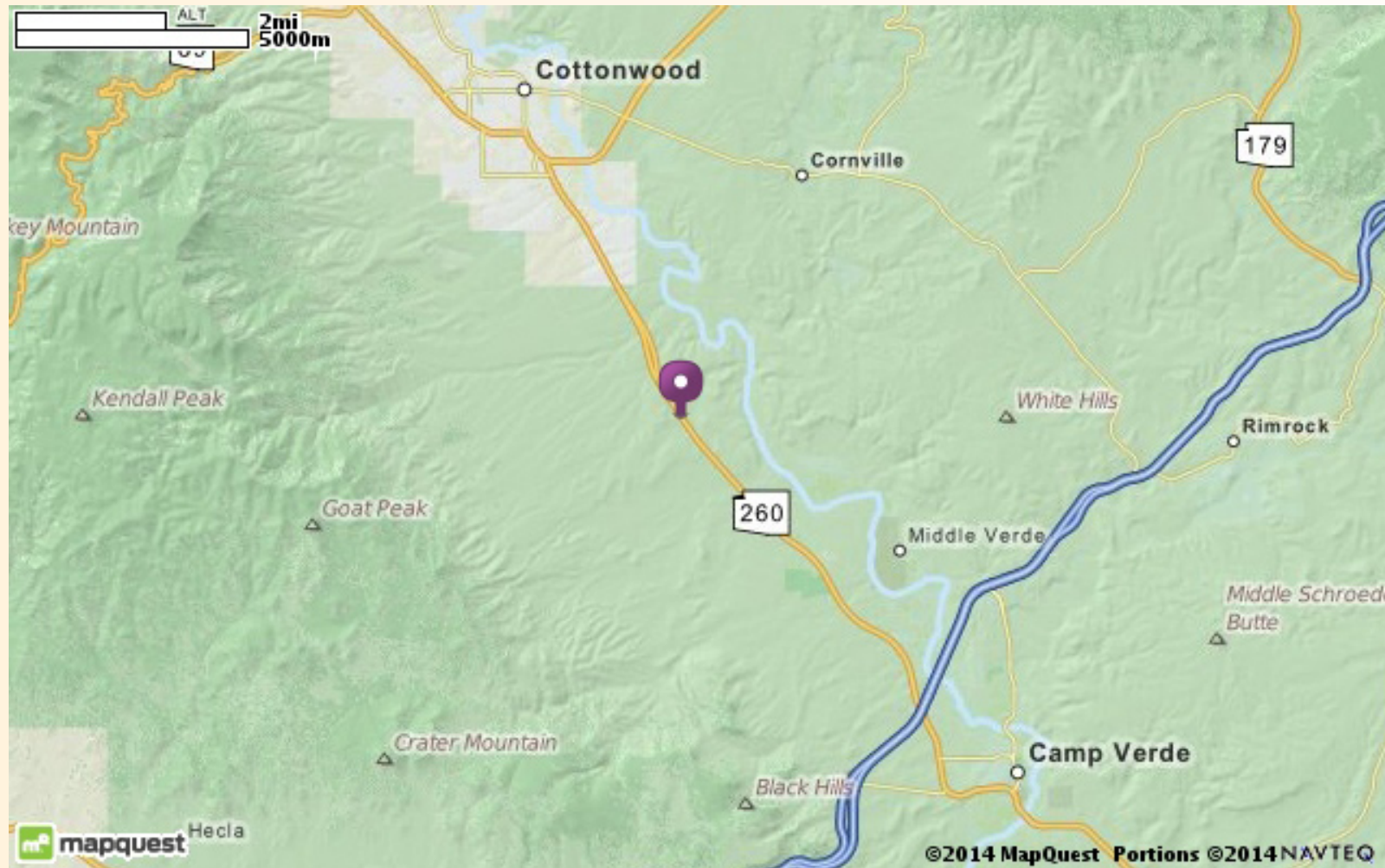
EXCLUSIVELY OFFERED BY DA VINCI REALTY, LLC

Mark T. Belsanti, CCIM  
928.254.1770 (C)  
928.779.3800 (O)  
928.222.0189 (F)  
mark@davincirealty.com

All information furnished regarding property for sale, rental or financing is from sources deemed reliable, but no warranty or representation is made to the accuracy thereof and same is submitted subject to errors, omissions, change of price, rental or other conditions prior to sale, lease or financing or withdrawal without notice. No liability of any kind is to be imposed on the broker herein.



# LOCATION



COMMERCIAL  
INVESTMENTS

EXCLUSIVELY OFFERED BY DA VINCI REALTY, LLC

Mark T. Belsanti, CCIM  
928.254.1770 (C)  
928.779.3800 (O)  
928.222.0189 (F)  
mark@davincirealty.com

All information furnished regarding property for sale, rental or financing is from sources deemed reliable, but no warranty or representation is made to the accuracy thereof and same is submitted subject to errors, omissions, change of price, rental or other conditions prior to sale, lease or financing or withdrawal without notice. No liability of any kind is to be imposed on the broker herein.

# AERIAL VIEW



COMMERCIAL  
INVESTMENTS

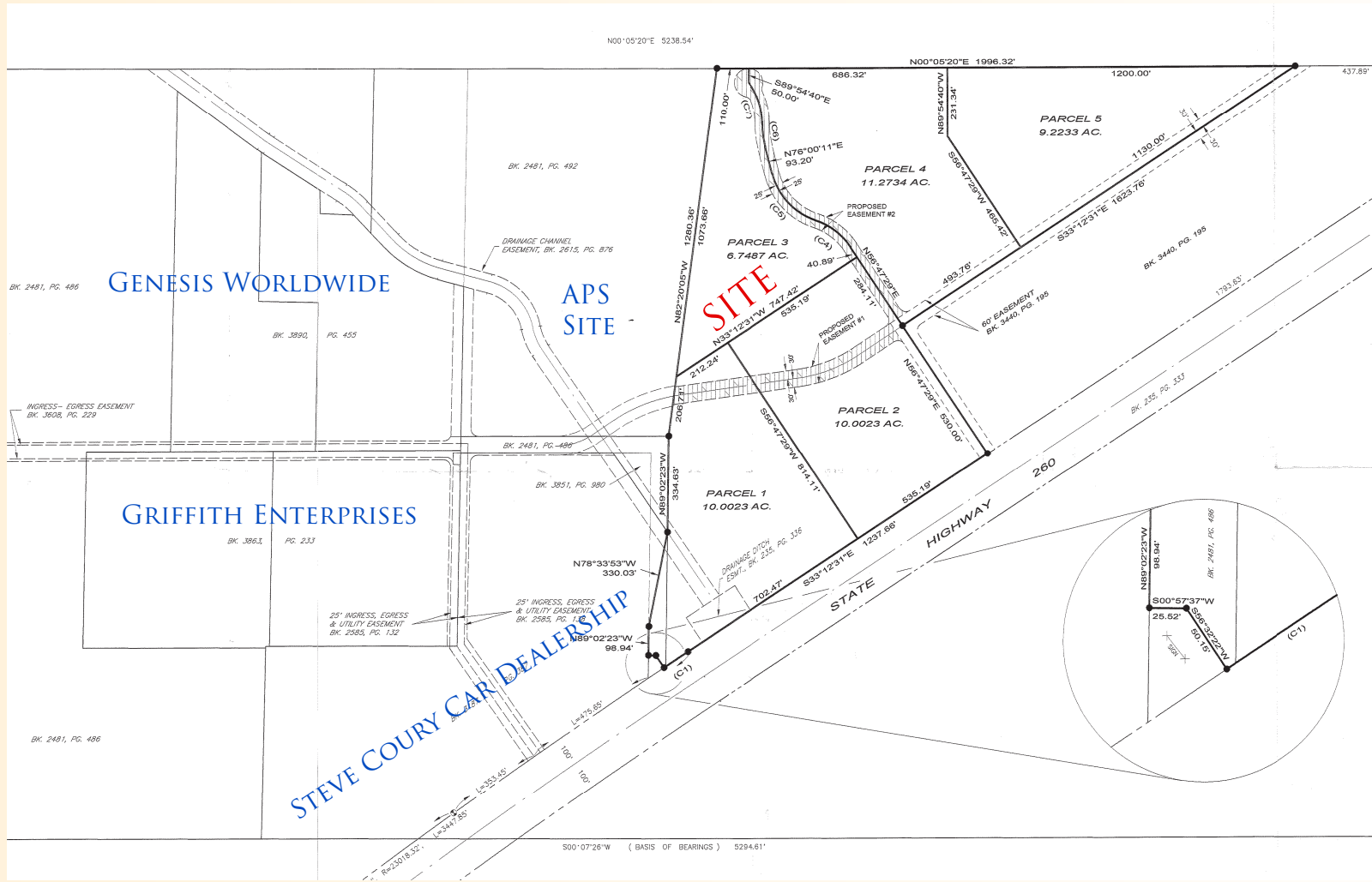
EXCLUSIVELY OFFERED BY DA VINCI REALTY, LLC

Mark T. Belsanti, CCIM  
928.254.1770 (C)  
928.779.3800 (O)  
928.222.0189 (F)  
[mark@davincirealty.com](mailto:mark@davincirealty.com)

All information furnished regarding property for sale, rental or financing is from sources deemed reliable, but no warranty or representation is made to the accuracy thereof and same is submitted subject to errors, omissions, change of price, rental or other conditions prior to sale, lease or financing or withdrawal without notice. No liability of any kind is to be imposed on the broker herein.



# PARCEL VIEW



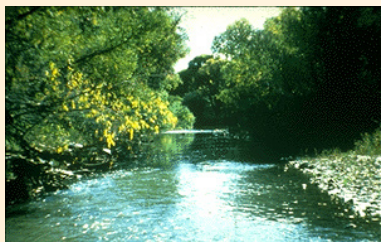
## COMMERCIAL INVESTMENTS

EXCLUSIVELY OFFERED BY DA VINCI REALTY, LLC

**Mark T. Belsanti, CCIM**  
**928.254.1770 (C)**  
**928.779.3800 (O)**  
**928.222.0189 (F)**  
**mark@davincirealty.com**

All information furnished regarding property for sale, rental or financing is from sources deemed reliable, but no warranty or representation is made to the accuracy thereof and same is submitted subject to errors, omissions, change of price, rental or other conditions prior to sale, lease or financing or withdrawal without notice. No liability of any kind is to be imposed on the broker herein.

# COMMUNITY PROFILE



Deadhorse State Park



Montezuma's Castle



Coffee Pot Rock

The Cottonwood/Verde Valley area is located geographically in the center of Arizona, approximately 100 miles North of Phoenix and 19 miles Southwest of Sedona. Cottonwood is bordered on the South, East and West by high mountains and on the North by mesas and buttes. Cottonwood is situated at an elevation of 3,300 feet. The City of Cottonwood attracts residents with its blend of rural atmosphere and urban amenities, offering shopping, financial, and professional services against the picturesque backdrop of the Verde River.

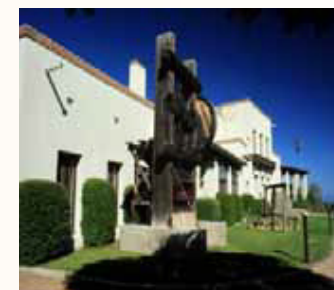
Highway 260 links Cottonwood to Interstate 17, which runs North to Flagstaff and South to Phoenix. Highway 89A, which links Cottonwood with Sedona, underwent an extensive widening project. Completed in September of 2002, Highway 89A was constructed to a total of four lanes wide, and travel time between the cities was cut to approximately 15 minutes. Additionally, the Mingus Bypass connects 89A to Mingus Avenue, which is located just three blocks North of Copperwood Square. Interstate 40 also services Yavapai County, which runs East-West, linking the area to California, as well as to destinations in the Midwest and on the East Coast. Public transit is provided by the Cottonwood Area Transit System (EATS). The Cottonwood Municipal Airport provides public and commercial air service. Shuttles are also available to and from Phoenix Sky Harbor International Airport.

Today, Cottonwood is a friendly, fast-growing family community that has more than doubled in population in the past 20 years with population presently over 11,000 and projected to grow in size to 17,000 by the year 2025. Yavapai County is once again experiencing a boom period with rapid increase in population growth. The clear dry air and moderate temperatures attract people of retirement age as well as those wishing to raise families away from the congestion and crime of the cities.

According to the 1990 census the County population was 107,714, the population estimate is now 129,500.



Mingus Mountain



Jerome State Historic Park



Tuzigoot National Park



COMMERCIAL  
INVESTMENTS

EXCLUSIVELY OFFERED BY DA VINCI REALTY, LLC

Mark T. Belsanti, CCIM  
928.254.1770 (C)  
928.779.3800 (O)  
928.222.0189 (F)  
mark@davincirealty.com

All information furnished regarding property for sale, rental or financing is from sources deemed reliable, but no warranty or representation is made to the accuracy thereof and same is submitted subject to errors, omissions, change of price, rental or other conditions prior to sale, lease or financing or withdrawal without notice. No liability of any kind is to be imposed on the broker herein.